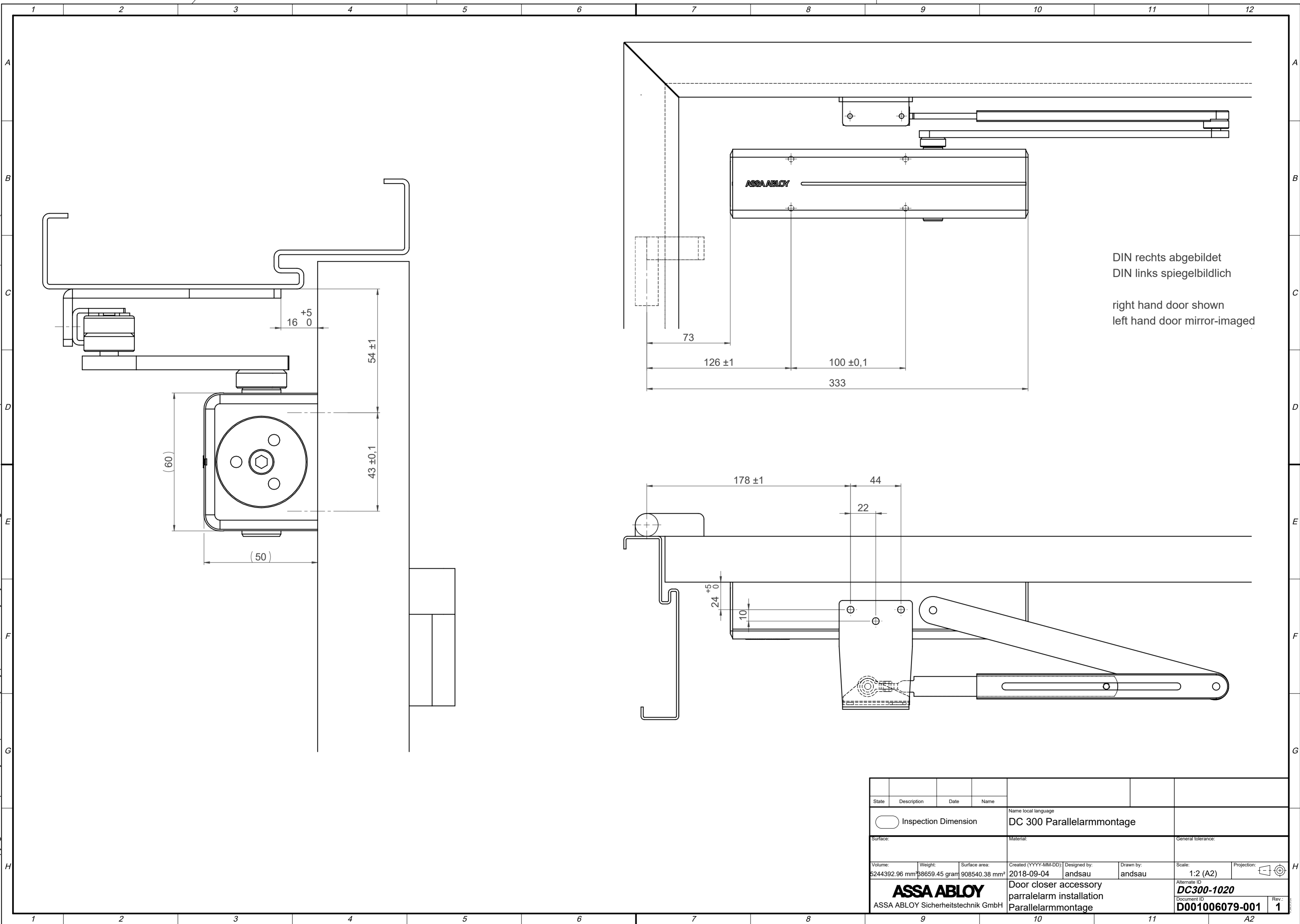


This work is copyright and no part may be reproduced, by any process, nor may any other exclusive right be exercised without the permission of ASSA ABLOY.



State	Description	Date	Name	Name local language		General tolerance:	
	○ Inspection Dimension			DC 300 Parallelarmmontage			
Surface:			Material:			General tolerance:	
Volume:	Weight:	Surface area:	Created (YYYY-MM-DD):	Designed by:	Drawn by:	Scale:	Projection:
5244392.96 mm³	38659.45 gram	908540.38 mm²	2018-09-04	andsau	andsau	1:2 (A2)	1
ASSA ABLOY ASSA ABLOY Sicherheitstechnik GmbH			Door closer accessory parralearm installation Parallelarmmontage			Alternate ID DC300-1020 Document ID D001006079-001 Rev.: 1	