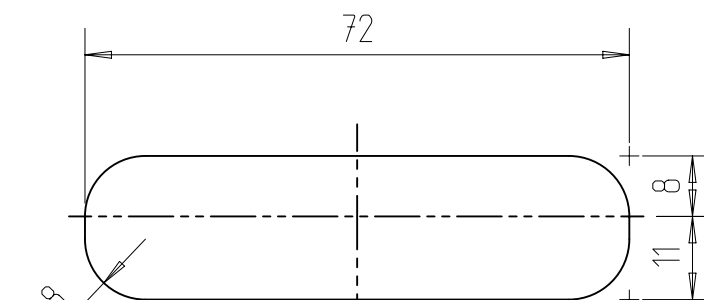
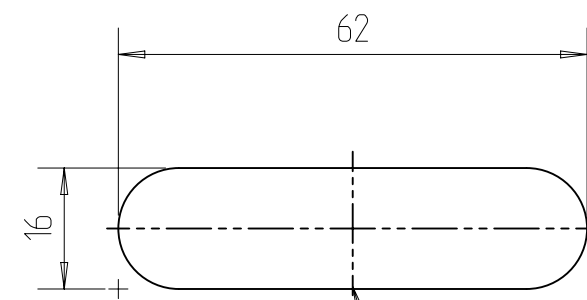
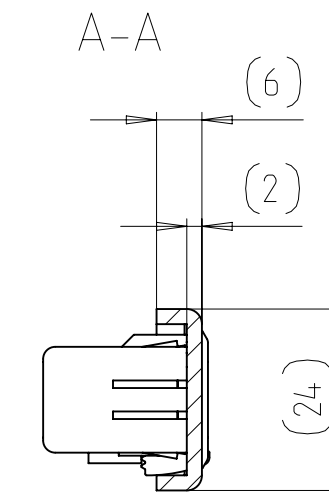
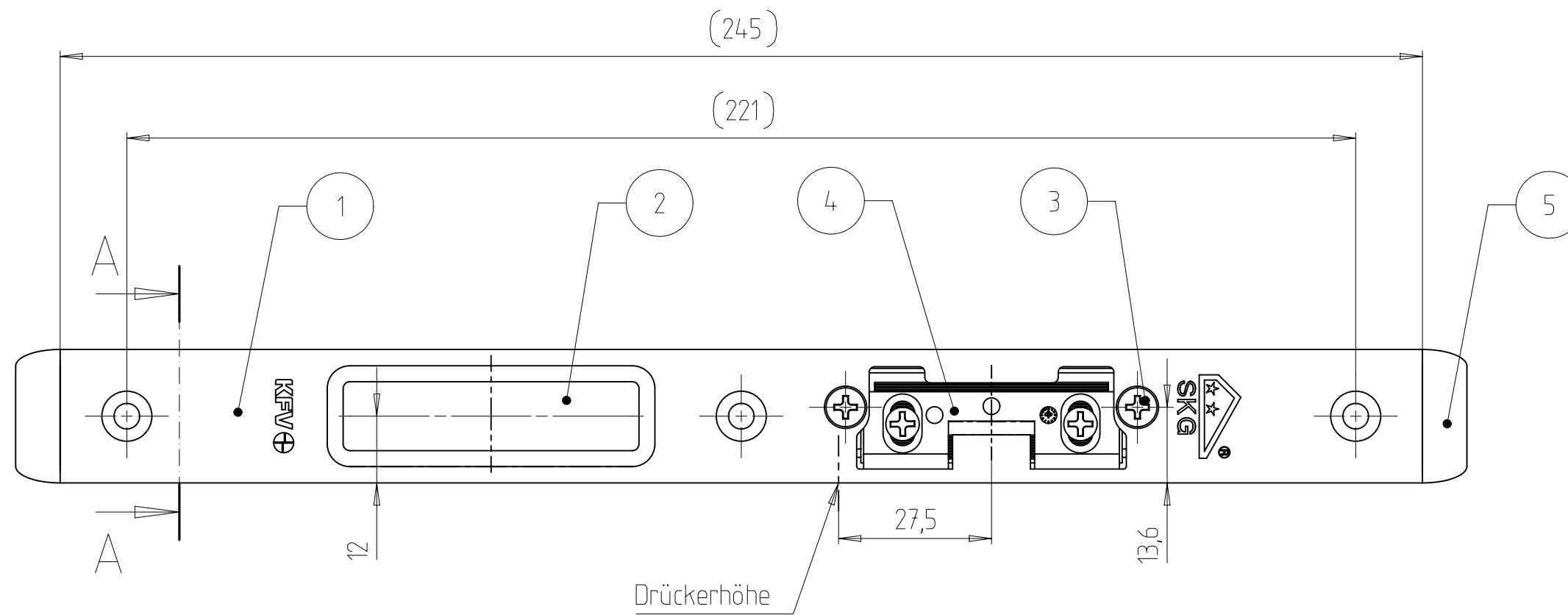
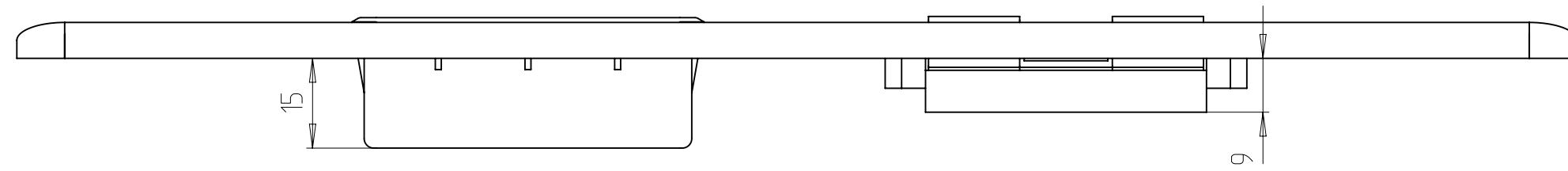
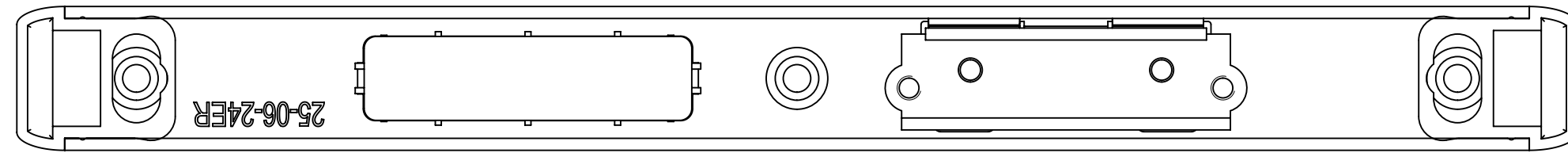


The Drawing and its contents are to be kept secret from third parties, particularly competitors. The drawing and documents which go with it are not to be duplicated either in local or extract, or used in other documentation without express approval (S1 and 3B litho - S1 and 3B litho). A reservation of rights in accordance with §12 PatG is declared for the event that a patent is granted.



Drückerhöhe

Mitte Riegel

Mitte Falle

① Frästiefe = angegebene Tiefe + min. 1 mm

Fräser \varnothing 16 mm
Anlaufring \varnothing 27 mm

gezeichnet DIN links
Spiegelbildlich DIN rechts

Artikel-Nr. auf der Rückseite geprägt

Tolerierung nach ISO 8015

Pos. 3 in Pos. 1 geklipst
Pos. 2 mit Pos. 1 und 4 verschraubt
Pos. 5 in Pos. 1 geklipst

①

Pos	Benennung	Stck	PDM-Nr.	Bemerk
5	Endkappe	2	9.811.00159	
4	AT_Stueck	1	7.803.00041	
3	Senkschraube DIN 965-M4x6	2	9.999.03370	
2	Hinterfuetterung	1	9.806.00080	
1	U-Profil-Schliessblech	1	9.861.03780	

Qty.	Type of Modification	Baugruppe vervollstaendigt	ANT	Drawn	Approved	Date
2	Fraesangaben hinzugefuegt		Y2999J	THODEP	RAISIGA	10.10.2012
Volume /mm ³	Weight/g	Material-No.	Item-No.	Tool-No.		
23556	160,643		25-06-24ERH			
Scale		Tolerance	Part-Description			
1 : 1		ISO2768MK	U-Profil-Schliessblech			
Drawn		Additional Notice		Document No.	Doc. Part No.	Revision
HOELTGENM				7.861.03883	000	01
Date	08.12.2009	KfV		Replacement for :	Test procedure	Status
Appr.	THODEP			Replaced by :		20
Date	08.12.2009					A2